



*Water Conditioning
& Scale Prevention*

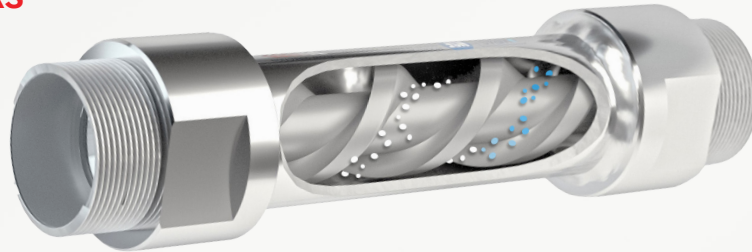




The Problem

Calcium carbonate in hard water, also known as calcite, creates scale problems. Scale forms when water is heated or subjected to a rapid change in pressure; like flowing out of a fixture. Scaling can cause premature equipment failure, reduce water heater efficiency and cause buildup on fixtures and appliances. ActivFlo converts calcite into aragonite, a harmless form which does not adhere to surfaces. Aragonite stays suspended in the water and flows harmlessly through the system.

How ActivFlo Works



Water flowing through ActivFlo generates a charge on the surface of a specialized alloy, and experiences a series of pressure and velocity changes, converting calcium carbonate into harmless aragonite.

Benefits

- Targets hard water problems caused by calcium
- Conditions water without negative effects to taste or feel
- Protects plumbing and appliances; maintains performance and efficiency
- No salt, power or maintenance required
- Compact, inline design saves space

Features

- Compatible with city water and well systems
- Industry's widest model range, from point of use to commercial applications over 900 GPM
- Proprietary flow-through design minimizes restriction and requires no pre-filtration
- High-grade stainless steel body for indoor, outdoor and underground installation in any mounting position
- 15 year warranty

Why ActivFlo™?

BY 

No more white spots on faucets.



Softer, smoother hair.



Limescale free showerheads.



Stain free countertops.

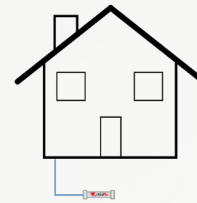
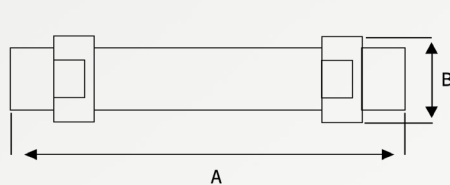


Whole House Models



ZAF010

ZAF034



Item	Flow Range	Pressure Drop	Connections	Body Length	Outside Diameter	Weight
	gpm	Cv	thread	inches (A)	inches (B)	lb
ZAF034	1 - 7	3.0	¾" NPTM	6.0	1.3	1.2
ZAF010	1 - 9	4.0	1" NPTM	7.3	1.7	2.0
ZAF010H	3 - 17	7.0	1" NPTM	8.3	1.9	2.2

Point of Use Models

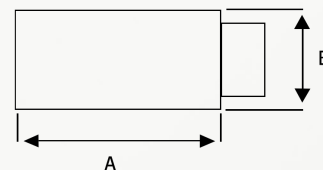
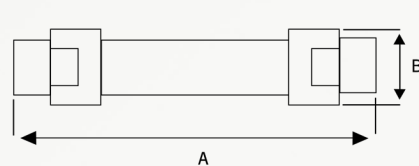


ZAF038



ZAF012

Also available in
matte Black &
Chrome



Item	Flow Range	Pressure Drop	Connections	Body Length	Outside Diameter	Weight
	gpm	Cv	thread	inches (A)	inches (B)	lb
ZAF038	0.5 - 4	1.5	¾" NPTM	3.6	0.7	0.2
ZAF012	0.2 - 3	2.5	½" NPTF x NPTM	3.8	0.9	0.5
ZAF012-B	0.2 - 3	2.5	½" NPTF x NPTM	3.8	0.9	0.5
ZAF012-C	0.2 - 3	2.5	½" NPTF x NPTM	3.8	0.9	0.5

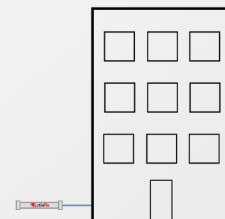
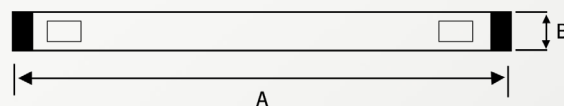
Commercial Models



ZAF125-250



ZAF300-600



Item	Flow Range	Connections	Body Length	Outside Diameter	Weight
	gpm	size / type	inches (A)	inches (B)	lb
ZAF125	16 - 31	1-¼" NPTM	21.6	1.25	6.4
ZAF150	31 - 45	1-½" NPTM	21.6	1.5	7.5
ZAF200	45 - 70	2" NPTM	21.6	2.0	8.6
ZAF250	70 - 92	2-½" NPTM	28.0	2.5	16.5
ZAF300	92 - 181	3" Flanged	33.5	3.0	44.0
ZAF400	181 - 333	4" Flanged	33.5	4.0	55.0
ZAF500	333 - 482	5" Flanged	33.5	5.0	77.0
ZAF600	482 - 925	6" Flanged	33.5	6.0	86.9

Max Pressure: 232 psi
Max Design Temperature: 210° F
Material: 304L Stainless Steel

Residential Sizing

	Nano 3/8"	Solo 1/2"	3/4"	1"	High Flow 1"
Residential Whole House			💧	💧	💧
Storage Water Heater			💧	💧	💧
Tankless Water Heater			💧		
Humidifier/Mister	💧	💧			
Icemaker	💧				
Showerhead		💧			
Hose Bibb		💧	💧		
Appliances	💧	💧			
Irrigation			💧	💧	💧



Scan for
more applications

Typical Applications

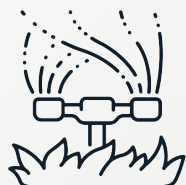
Residential



Whole House



Showerhead



Irrigation

Commercial



Hotel



Laundromat



Manufacturing

Specialty & Point of Use



Coffee Machine



Fixtures



Ice Machine