



SERVICE

TYPE: INSTRUCTIONS FOR REPLACING EXPANSION TANK BLADDER

MODELS: ZELA 35 TO ZELA 800;
ZTXA-35 TO ZTXA-800;
ZHXA ALL MODELS

Date: 9/25

BLADDER REMOVAL

Tank Preparation

- Disconnect tank from piping system.
- Remove any air from the air charge valve
- Lay tank on its side if possible
- Remove bottom elbow; remove jam nut around threaded connection; push threaded connection into tank
- Remove tank top cover; pull bladder flange out of tank; remove bladder
- Push threaded connector down into bladder and remove
- Inspect connector and inside of tank

INSPECT INTERIOR

Use Strong Trouble Light to Verify

- No sharp or rough edges
- No weld pinholes on openings or seams
- No dirt or foreign debris (remove if found)

BLADDER INSTALLATION

Preparation

- Check replacement bladder for defects
- Lay bladder with collar neck facing floor
- Roll bladder from both sides
- Drop threaded connector into bladder and insert into bottom opening
- Carefully stand up tank upright
- Layout bladder and roll before inserting
- Guide bladder into tank
- Pull threaded connector through and screw on jam nut
- Carefully lay the tank on its side once more
- Tighten jam nut with pipe wrench to approximately hand tight +/- 3/4 turn
- Wrap threaded connector with teflon tape, apply pipe sealant and attach elbow
- Inspect and make sure bladder is not twisted
- Install top cover evenly, tighten nuts in a star pattern to make an airtight seal
- Return tank to vertical orientation
- Screw valve core and precharge tank to minimum system pressure
- Verify pressure and screw cap onto valve

Pre-charge

- Pre-charge to required system pressure
- Test for leaks at bottom threaded connection, top air-side connection and top cover using soapy water



SERVICE

TYPE: INSTRUCTIONS FOR REPLACING EXPANSION TANK BLADDER

MODELS: ZELA 1000 TO ZELA 15000

Date: 9/25

BLADDER REMOVAL

Tank Preparation

- Remove any air from the air charge valve
- Remove bottom drain to evacuate water that escaped to the tank air side
- Remove tank top cover
 - Attached to cover is diffuser, $\frac{3}{4}$ " brass barb fitting, and dip tube hose
 - Inspect all components for integrity for reuse
- Remove water inside bladder with sump or other means
- Remove bladder and inspect for potential failure mode
- Lay tank on its side if possible

INSPECT INTERIOR

Use Strong Trouble Light to Verify

- No sharp or rough edges
- No weld pinholes on openings or seams
- No dirt or foreign debris (remove if found)

BLADDER INSTALLATION

Preparation

- Check replacement bladder for defects
- Lay bladder with collar neck facing floor
- Roll bladder from both sides

Top Flange

- Insert bladder
- Push in until collar is against weld neck
- Fold both collar ends (bladder reinforced area) into flange
- Use rubber mallet if needed until collar is flush with flange
- Make sure dip tube hose is securely fastened to brass fitting
- Feed dip tube hose into bladder (open bladder if necessary)
- Tighten nuts in a star pattern to make an airtight seal
- Apply thread tape and sealant to 1" sq. hd. plug and reattach to tank drain

Pre-charge

- Pre-charge to required system pressure
- Test for leaks at bottom drain, top 1" NPT air-side connection and top cover using soapy water

PARTS LIST

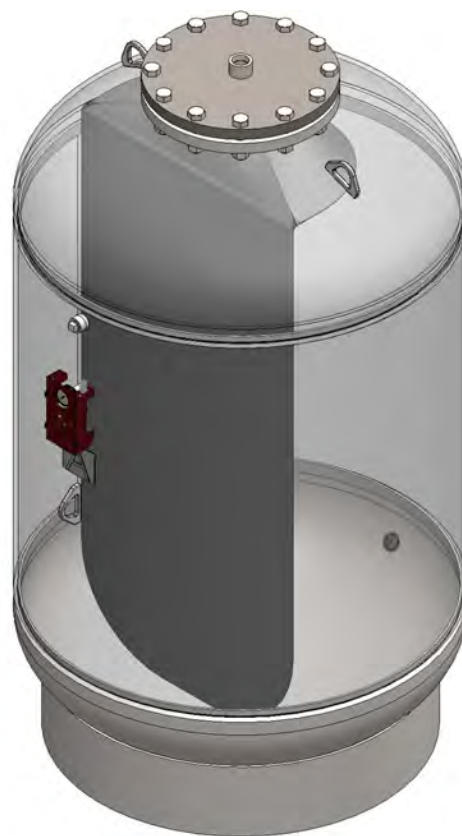
Bladder

$\frac{3}{4}$ " male brass fitting

$\frac{3}{4}$ " rubber hose (cut to proper length)

(8) bolts (SA-193-B7)

(8) UNC hex head nuts (SA-194-2H)





SERVICE

TYPE: INSTRUCTIONS FOR REPLACING EXPANSION TANK BLADDER

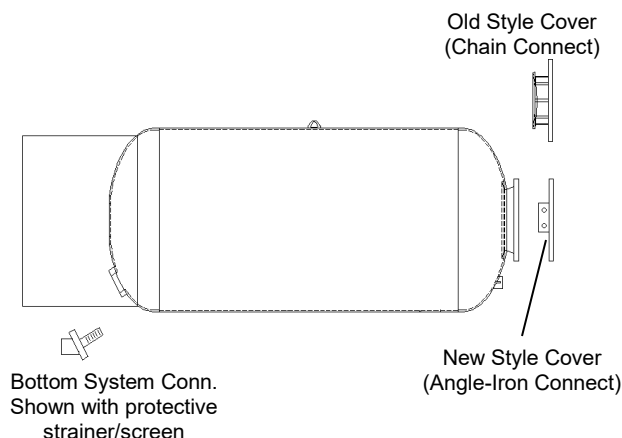
MODELS: ZHXA 1000 – 15,000;

ZTXA 1000 - 2000

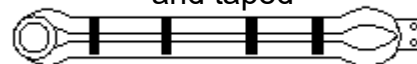
Date: 9/25

1. Tank must be drained and all pressure released.
2. Bladder is attached to top and bottom of tank.
3. Remove cover plate from the system connection at the bottom of the tank, this will expose the collar portion of the bladder. Take and push this collar portion into the tank. This will release the bladder from the bottom of the tank.
4. Remove all nuts and bolts from the top cover located at the top center of the tank. Carefully lift up the plate and note that the bladder is attached to the bottom side of the plate. Detach the bladder from the top plate.
5. Remove the old bladder.
6. Take the new bladder and roll it lengthwise in a tube shape. Tape can be used to keep the bladder in this tube shape.
7. Insert the new bladder into the large opening on the top of the tank. As the bladder is being inserted, make sure the bladder's molded flange is aligned to meet the steel flanged system connection at the bottom of the tank. If tape was used on the bladder, remove it as the bladder is being inserted.
8. At the bottom flange (system connection) reach into the tank and pull the bladder flange through, and position on steel flange. Re-attach cover plate to complete the system connection. **NOTE: Make sure the strainer is intact to the bottom plate before installing. Caution: Without bottom strainer the bladder will rupture during air charging.**
9. From the top flange, make sure the bladder is not twisted inside the tank. Re-attach bladder to the cover plate. Re-attach cover plate on to the tank. Tighten nuts in a star pattern to make an airtight seal.
10. Re-charge the tank to the required pre-charge pressure.

Components



Bladder – shown rolled and taped



Bladder Installed

